



## SonicWALL SSL VPN Series

SECURE REMOTE ACCESS

**Easy-to-use, Affordable, Secure and Clientless Remote Access**

- **Seamless integration behind virtually any firewall**
- **Clientless connectivity**
- **Unrestricted concurrent user tunnels**
- **NetExtender technology**
- **Granular policy configuration controls**
- **SonicWALL Virtual Assist**
- **Personalized portal**
- **Enhanced layered security in a SonicWALL environment**
- **Tokenless two-factor authentication**
- **Context-sensitive help**

In recent years, there has been an increased dependence on mobile workers. This has prompted a need for providing secure remote access to network resources as well as remote control PC access. SonicWALL® provides a solution that meets the needs of organizations with demanding remote workforce requirements. SonicWALL SSL VPN security solutions, for networks of any size, are simple to deploy and even easier to use for a fraction of the price of most other SSL VPN solutions. Unlike solutions that charge a per-tunnel licensing fee, SonicWALL SSL VPN solutions have no restrictions on the number of concurrent user tunnels for remote access, allowing organizations to scale their remote access connectivity as they grow.

Remote access has never been so simple to use. Mobile employees only require a standard Web browser to log into a Web portal which provides access to e-mail, files, applications and internal Web sites. For even more powerful capabilities such as seamless, secure access to any resource on the corporate network including servers and complex or home-grown applications, the appliances transparently push a downloadable thin client (NetExtender) to the user's desktop or laptop.

Remote support is also easy to implement using SonicWALL® Virtual Assist.\* It is a clientless tool that enables a technician to assume control of a customer's PC or laptop in order to provide assistance. As a result, service can be provided on-demand while keeping costs low.

### Features and Benefits

**Seamless integration behind virtually any firewall** enables organizations to leverage the existing network infrastructure without the need to purchase additional hardware.

**Clientless connectivity** removes the need for a pre-installed or "fat" VPN client, thus freeing administrators from the tedious and costly task of installing and updating a client on users' PCs.

**Unrestricted concurrent user tunnels**, unlike per-tunnel licensing, significantly reduces the costs associated with deploying a scalable secure remote access solution.

**NetExtender technology** provides enhanced capabilities such as access to additional resources, services and applications on the corporate network.

**Granular policy configuration controls** enable network administrators to create policies that "lock down" a user to specific applications/resources and prevent unauthorized access to them.

**SonicWALL Virtual Assist\*** enables technicians to provide secure on-demand assistance to customers while leveraging the existing authentication infrastructure.

A **personalized portal**, provided through a customizable Web interface, displays only those resources that are available to the user based on company policy.

**Enhanced layered security** is enabled when deployed alongside a SonicWALL network security appliance which utilizes powerful deep packet inspection technology to scan traffic for malicious threats such as viruses, worms, Trojans and spyware.

**Tokenless two-factor authentication** provides enhanced protection against key loggers by combining a unique one-time password, generated by the SSL VPN appliance and sent to a remote user's mobile device or e-mail address, with the user's network user name and password.

**Context-sensitive help** is provided throughout the Web-based administrative interface and end-user portal, increasing management flexibility and ease-of-use.

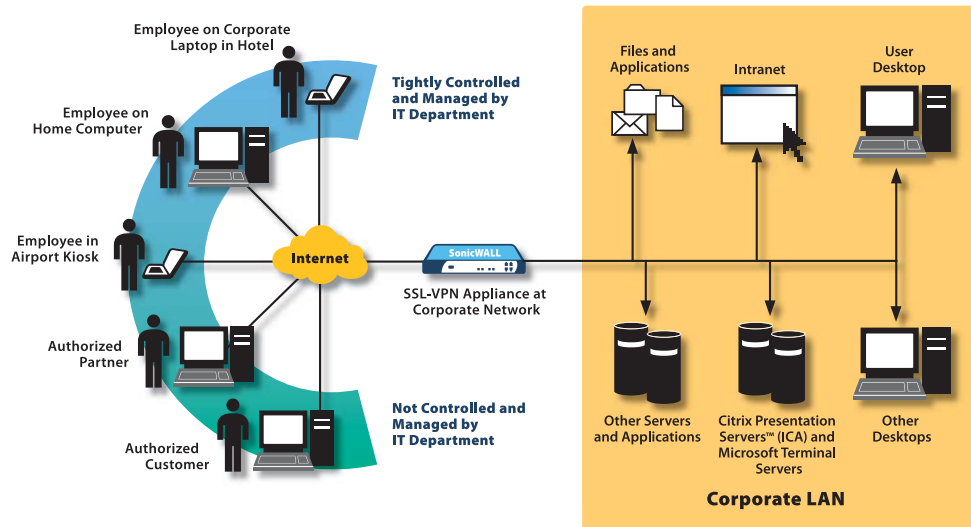
\* Additional license required; Only available as a software add-on module for the SSL-VPN 2000 and SSL-VPN 4000

## SSL VPN: Secure Remote Access for Any Authorized User

### Key Features

The SonicWALL SSL VPN Series extends secure remote access beyond remote offices and corporate controlled laptops out to network environments and remote computers that are not controlled and managed by the corporate IT department.

Additionally, granular access controls enable the network administrator to provide remote access to specific and defined resources not only employees, but also to trusted partners and customers.



**Secure**  
**remote access**  
**that's easy to**  
**deploy, use and**  
**won't break**  
**your budget**

### Awards



(SSL-VPN 200)



(SSL-VPN 2000)

### Certifications



(SSL-VPN 200/2000/4000)



(SSL-VPN 2000/4000)

## Access the Resources You Need from Anywhere, When You Need Them

SonicWALL SSL VPN solutions can be configured to provide users with simple, secure and clientless remote access to a broad range of resources on the corporate network.

### Using only a standard Web browser, users have access to:

- Files and file systems (Includes support for FTP and Windows Network File Sharing)
- Web-based applications
- Microsoft Outlook Web Access, Lotus Domino Web Access and other Web-enabled applications
- HTTP and HTTPS intranets

### SonicWALL NetExtender technology provides expanded access to:

- E-mail access through native clients residing on the user's laptop (Microsoft Outlook, Lotus® Notes, etc.)
- Commercial and home-grown applications
- Flexible network access as granted by the network administrator

### Added flexibility for access to:

- Applications installed on desktop machines or hosted on an application server
- Full remote control of desktop or server machines
- Terminal Services (RDP), VNC, Telnet and SSH
- Citrix Presentation Server™ (ICA)\*

### Cost effective alternative to traditional remote access and remote support products:

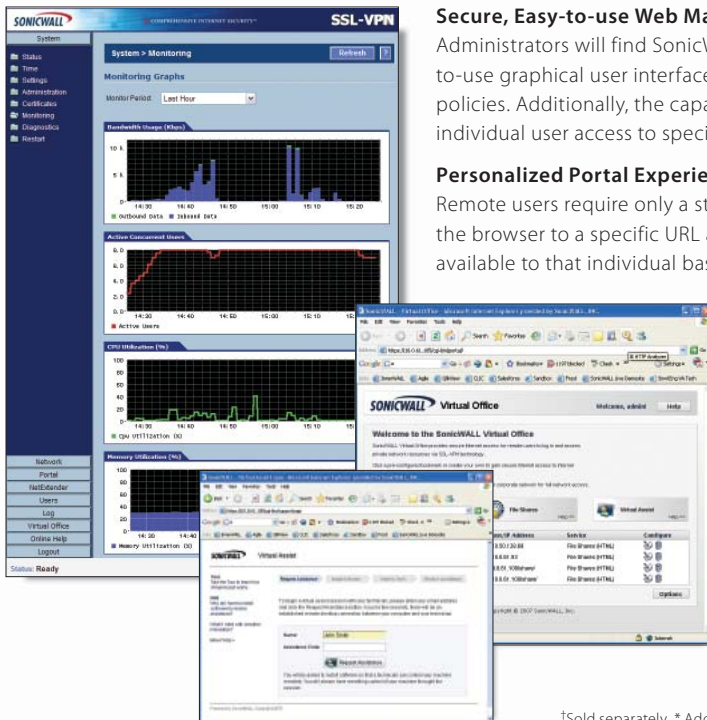
- Access to full remote control of the desktop—however, unlike more traditional VNC and RDP, this requires no client software installation
- Access to a customer's laptop or desktop, by simply using SonicWALL Virtual Assist\*\*, a Web browser that seamlessly pushes a "thin" client—unlike traditional remote support tools that require pre-installation

\*Available only on the SSL-VPN 2000 and 4000

\*\*Additional license required; Only available as a software add-on module for the SSL-VPN 2000 and SSL-VPN 4000

## Simple to Use, Simple to Manage

SonicWALL SSL VPN solutions feature intuitive Web interfaces that simplify remote access and policy management from any location. Context-sensitive help is provided throughout the administrative and end-user portals to enhance usability. Additionally, the SSL VPN Series can be managed globally using the SonicWALL Global Management System (GMS).† Using GMS, administrators can now monitor the up/down status of each SonicWALL SSL VPN appliance and use one-click login to access the management interface.



### Secure, Easy-to-use Web Management Interface

Administrators will find SonicWALL SSL VPN solutions extremely simple to deploy and manage. An easy-to-use graphical user interface makes it simple to configure, monitor and update the appliance and user policies. Additionally, the capability for granular policy configuration provides complete control over individual user access to specific network resources.

### Personalized Portal Experience

Remote users require only a standard browser to launch a personalized Web portal. The user simply points the browser to a specific URL and the SSL VPN portal automatically displays only those resources that are available to that individual based on company policy.

### GMS Management

The administrator can now configure the SSL VPN appliance to send heartbeat and syslog messages to a designated SonicWALL Global Management System (GMS 4.0 or higher)†

Multiple SSL VPN appliances can be centrally managed from GMS. The administrative interface of an SSL VPN appliance can be accessed via one click in the GMS interface.

### SonicWALL Virtual Assist\*

The administrator can easily configure and license the module from the Administrative portal. The technician portal is used to manage and schedule the support queue. The easy-to-use user portal guides a customer through the simple steps of requesting and receiving support.

†Sold separately \* Additional license required; Only available as a software add-on module for the SSL-VPN 2000 and SSL-VPN 4000

## Seamless Integration Behind Virtually Any Firewall

### Behind third-party firewalls

SonicWALL SSL VPN appliances integrate seamlessly into any network topology and can be easily deployed alongside any third-party firewall as a secure remote access solution. This enables IT administrators to leverage the existing network infrastructure without the need to purchase additional hardware.

### Enhanced security when used in a SonicWALL network environment

When deployed with a SonicWALL network security appliance running SonicWALL Gateway Anti-Virus, Anti-Spyware and Intrusion Prevention Service,\* SonicWALL SSL VPN solutions provide enhanced network integration and security benefits.

### Endpoint security enforcement

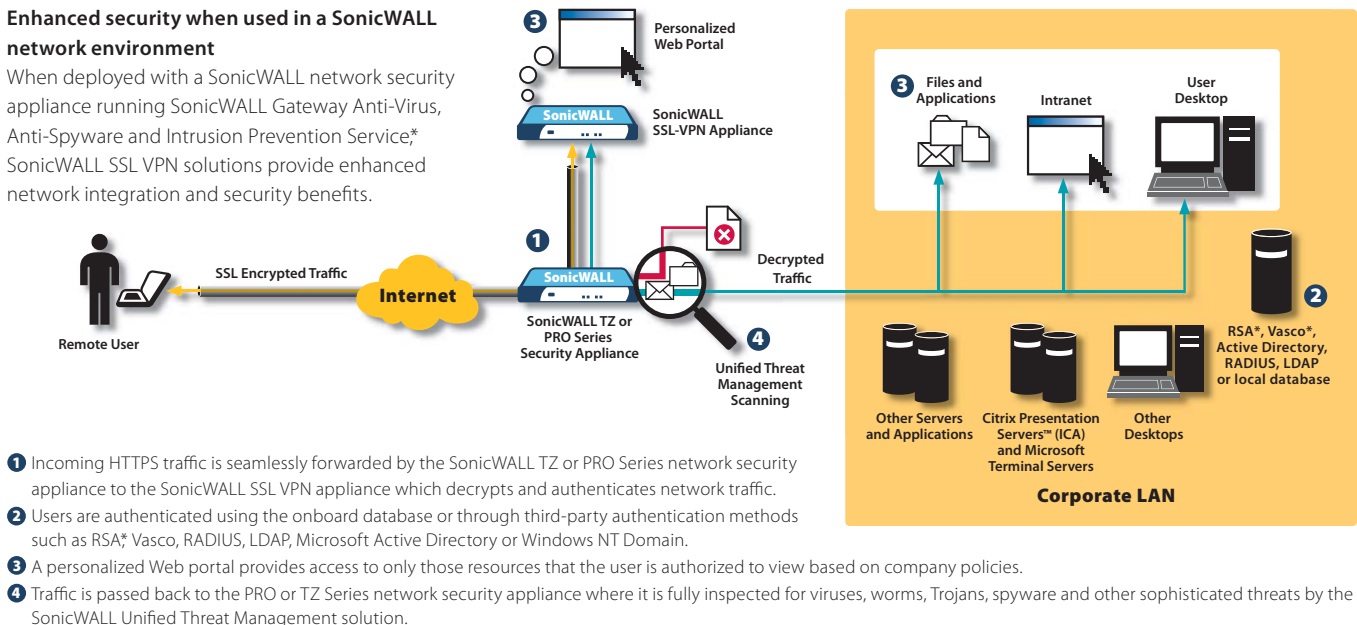
By deploying SonicWALL NetExtender and Enforced Client Anti-Virus and Anti-Spyware† on managed PCs, administrators can configure policies that require every computer accessing the network to have the most recent version of anti-virus and anti-spyware software installed and active.

†Sold separately

### Leveraging existing infrastructure

SonicWALL Virtual Assist\* can tightly integrate with an existing LDAP, AD, NT Domain, Radius, RSA or Vasco infrastructure. Alternately, the local database and the built-in tokenless two factor authentication may be used.

\* Additional license required; Only available as a software add-on module for the SSL-VPN 2000 and SSL-VPN 4000



\*Available only on the SSL-VPN 2000 and 4000

# Specifications

## SonicWALL SSL VPN Series

### Performance

|  |   |
|--|---|
| SSL-VPN 200  | Recommended for organizations with 50 or fewer employees  |
| Concurrent User License:                                 | Unrestricted  |
| Recommended Maximum Concurrent Users:                    | 10  |
| SSL-VPN 2000   | Recommended for organizations with 500 or fewer employees |
| Maximum allowable concurrent Virtual Assist technicians: | 4   |
| Concurrent User License:                                 | Unrestricted  |
| Recommended Maximum Concurrent Users:                    | 50  |
| SSL-VPN 4000   | Recommended for organizations with 500 or more employees  |
| Maximum allowable concurrent Virtual Assist technicians: | 25  |
| Concurrent User License:                                 | Unrestricted  |
| Recommended Maximum Concurrent Users:                    | 200   |

### Key Features

|                                       |  |
|---------------------------------------|--|
| Applications Supported                |  |
| Proxy                                 | Citrix (ICA)* HTTP, HTTPS, FTP, SSH, Telnet, RDP, VNC, Windows* file sharing (Windows SMB/CIFS)                                    |
| NetExtender                           | Any TCP/IP based application: ICMP, VoIP, IMAP, POP, SMTP, etc.  |
| Encryption                            | DES (128), 3DES (128, 256), AES (128, 192, 256), ARC4 (128), MD5, SHA-1  |
| Authentication                        | RSA*, Vasco, One-time Passwords, Internal user database RADIUS, LDAP, Microsoft, Active Directory, Windows NT Domain               |
| Multiple Domain Support               | Yes  |
| Fine Grain Access control             | At the user, user group and network resource level   |
| Session Security                      | Inactivity timeouts prevent unauthorized use of inactive sessions  |
| Certificates                          |  |
| Server                                | Self-signed with editable common name and imported from third parties  |
| Client                                | Optional client certificates supported*  |
| Cache Cleaner                         | Optional. Upon logout all cached downloads, cookies and URLs downloaded through the SSL tunnel are erased from the remote computer |
| Client PC Operating Systems Supported |  |
| Proxy                                 | All operating systems  |
| NetExtender                           | Windows 2000, 2003, XP, Vista (32 and 64-bit)  |
| Web Browsers Supported                | Microsoft Internet Explorer, Firefox Mozilla   |
| Personalized Portal                   | The remote user sees only those resources that the administrator has granted access to based on company policy                     |
| Management                            | Web GUI (HTTP, HTTPS), Send syslog and heartbeat messages to GMS (4.0 and higher)  |
| Usage Monitoring                      | Graphic monitoring of memory, CPU, users and bandwidth usage*  |
| Logging                               | Detailed logging in an easy-to-read format, Syslog supported e-mail alerts   |
| Single-Arm Mode                       | Yes  |
| SonicWALL Virtual Assist*             | Connection to remote PC, chat, FTP and diagnostic tools  |

### Hardware

|                                     |   |
|-------------------------------------|---|
| Hardened Security Appliance         |   |
| SSL-VPN 200                         | Yes   |
| SSL-VPN 2000                        | Yes   |
| SSL-VPN 4000                        | Yes   |
| Cryptographic Hardware Acceleration |   |
| SSL-VPN 200                         | Yes   |
| SSL-VPN 2000                        | Yes   |
| SSL-VPN 4000                        | Yes   |
| Interfaces                          |   |
| SSL-VPN 200                         | (5) 10/100 Ethernet                                     |
| SSL-VPN 2000                        | (4) 10/100 Ethernet, (1) Serial port                    |
| SSL-VPN 4000                        | (6) 10/100 Ethernet, (1) Serial port                    |
| Processors                          |   |
| SSL-VPN 200                         | SonicWALL security processor, cryptographic accelerator |
| SSL-VPN 2000                        | x86 main processor, cryptographic accelerator           |
| SSL-VPN 4000                        | P4 Celeron main processor, cryptographic accelerator    |
| Memory (RAM)                        |   |
| SSL-VPN 200                         | 128 MB  |
| SSL-VPN 2000                        | 512 MB  |
| SSL-VPN 4000                        | 1 GB  |
| Flash Memory                        |   |
| SSL-VPN 200                         | 16 MB   |
| SSL-VPN 2000                        | 128 MB  |
| SSL-VPN 4000                        | 128 MB  |
| Power Supply                        |   |
| SSL-VPN 200                         | 20W, 12VDC, 1.66A                                       |
| SSL-VPN 2000                        | Internal  |
| SSL-VPN 4000                        | Internal  |
| Max Power Consumption               |   |
| SSL-VPN 200                         | 10.4 W  |
| SSL-VPN 2000                        | 48 W  |
| SSL-VPN 4000                        | 108 W   |
| Total Heat Dissipation              |   |
| SSL-VPN 200                         | 35.6 BTU  |
| SSL-VPN 2000                        | 163.7 BTU   |
| SSL-VPN 4000                        | 368.3 BTU   |
| Dimensions                          |   |
| SSL-VPN 200                         | 7.45 x 4.55 x 1.06 in<br>18.92 x 11.56 x 2.69 cm        |
| SSL-VPN 2000                        | 17.00 x 10.00 x 1.75 in<br>43.18 x 25.40 x 4.45 cm      |
| SSL-VPN 4000                        | 17.00 x 13.25 x 1.75 in<br>43.18 x 33.66 x 4.45 cm      |
| Weight                              |   |
| SSL-VPN 200                         | 3.00 lbs<br>1.36 kg                                     |
| SSL-VPN 2000                        | 14.80 lbs<br>6.71 kg                                    |
| SSL-VPN 4000                        | 18.50 lbs<br>8.39 kg                                    |
| WEEE Weight                         |   |
| SSL-VPN 200                         | 2.00 lbs<br>0.91 kg                                     |
| SSL-VPN 2000                        | 8.80 lbs<br>3.99 kg                                     |
| SSL-VPN 4000                        | 13.0 lbs<br>5.90 kg                                     |
| Major Regulatory Compliance         |   |
| SSL-VPN 200                         | FCC Class A, ICES Class A, CE, C-Tick, VCCI             |
| SSL-VPN 2000                        | Class A, MIC, NOM, UL, cUL, TUV/GS, CB                  |
| SSL-VPN 4000                        | Class A, MIC, NOM, UL, cUL, TUV/GS, CB                  |
| Environment                         |   |
| SSL-VPN 200                         | 40-105° F, 5-40° C                                      |
| SSL-VPN 2000                        | Humidity 10-90% non-condensing                          |
| SSL-VPN 4000                        | Humidity 10-90% non-condensing                          |
| MTBF                                |   |
| SSL-VPN 200                         | 9.0 years   |
| SSL-VPN 2000                        | 11.2 years  |
| SSL-VPN 4000                        | 9.2 years   |

\* Available only on the SSL-VPN 2000 and 4000

### SonicWALL Value-added Security Services

SonicWALL SSL VPN solutions integrate seamlessly behind virtually any firewall. The traffic to a SonicWALL SSL VPN appliance deployed alongside a SonicWALL Network Security appliance, can be fully inspected for content-based threats such as viruses, spyware and Trojans prior to being forwarded to its final destination on the network. Support for the SonicWALL Virtual Assist module is included in the support purchased for the appliance. For more information on SonicWALL security services, including gateway anti-virus, anti-spyware, intrusion prevention and content filtering, please visit our Web site at <http://www.sonicwall.com>.

### SonicWALL, Inc.

1143 Borregas Avenue  
Sunnyvale CA 94089-1306

T +1 408.745.9600  
F +1 408.745.9300

[www.sonicwall.com](http://www.sonicwall.com)



SonicWALL SSL-VPN 200 (International) 01-SSC-5947

SonicWALL Dynamic Support 8x5 (1 Year) 01-SSC-5642

SonicWALL Dynamic Support 8x5 (2 Years) 01-SSC-6244

SonicWALL Dynamic Support 8x5 (3 Years) 01-SSC-6245

SonicWALL Dynamic Support 24x7 (1 Year) 01-SSC-5643

SonicWALL Dynamic Support 24x7 (2 Years) 01-SSC-6246

SonicWALL Dynamic Support 24x7 (3 Years) 01-SSC-6247



SonicWALL SSL-VPN 2000 (International) 01-SSC-5953

SonicWALL Dynamic Support 8x5 (1 Year) 01-SSC-5646

SonicWALL Dynamic Support 8x5 (2 Years) 01-SSC-6236

SonicWALL Dynamic Support 8x5 (3 Years) 01-SSC-6237

SonicWALL Dynamic Support 24x7 (1 Year) 01-SSC-5647

SonicWALL Dynamic Support 24x7 (2 Years) 01-SSC-6238

SonicWALL Dynamic Support 24x7 (3 Years) 01-SSC-6239



SonicWALL SSL-VPN 4000 (International) 01-SSC-5961

SonicWALL Dynamic Support 8x5 (1 Year) 01-SSC-6248

SonicWALL Dynamic Support 8x5 (2 Years) 01-SSC-6249

SonicWALL Dynamic Support 8x5 (3 Years) 01-SSC-6250

SonicWALL Dynamic Support 24x7 (1 Year) 01-SSC-6251

SonicWALL Dynamic Support 24x7 (2 Years) 01-SSC-6252

SonicWALL Dynamic Support 24x7 (3 Years) 01-SSC-6253